

Throws, from top: khadi cotton 'Kingsmead' (green), 125 x 190cm, €765; and jute 'Grosvenor' (beige), 115 x 180cm, €660; both from Jupe by Jackie



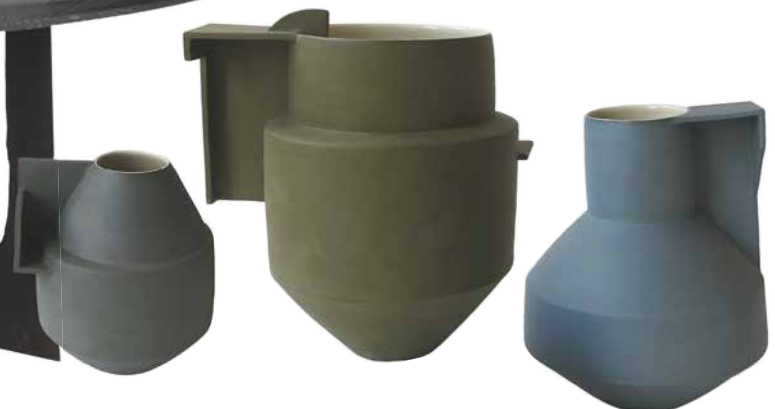
'Ginger A' metal wall light with oak laminate shade, 41 x 55.5cm projection, by Joan Gaspar, €620.40, from Marset



Maple and linen 'Belgard Sofa' (angora), 77.5 x 249 x 98cm, \$9,500, from Dmitriy & Co



'Scorched Ash Dining Table' (blackened timber), by Sebastian Cox, 120 x 76 x 200cm, £8,400, from The New Craftsmen



'The Constructed Vessel' ceramics, by Derek Wilson, from 18cm high, from £715 each, from Flow Gallery >