

ELLE DECOR

ARCHITECTS *of* **DESIRE**

**ESCAPE
INTO
JAIPUR
BEIRUT
NEW YORK
TOKYO
CINCINNATI
SHANGHAI**

JANUARY/
FEBRUARY 2018
ELLEDECOR.COM

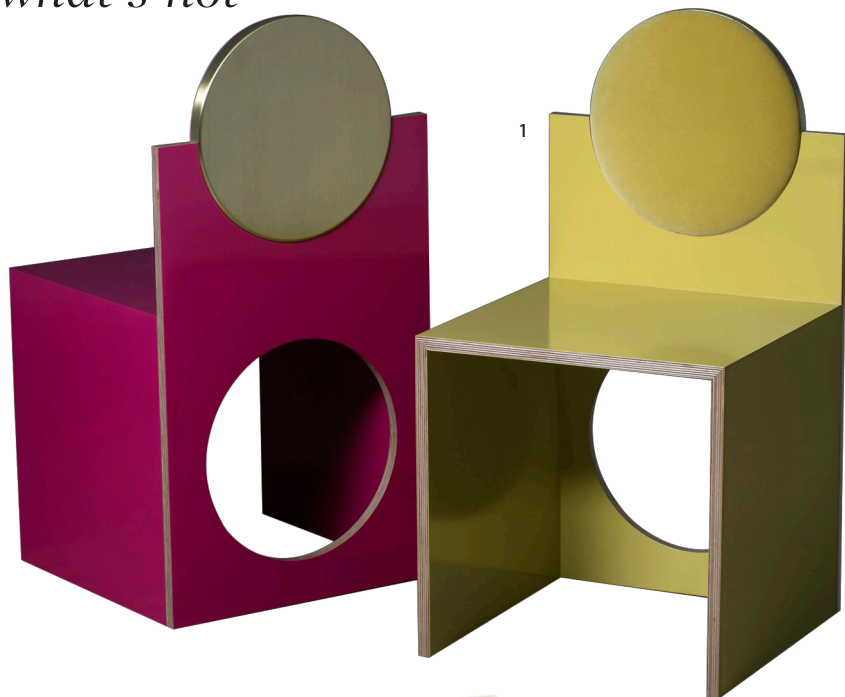
What's HOT

Dispatches from the World of Design



Enter a new era of faux florals and French pottery, thanks to the Green Vase's exquisitely delicate paper stems and ceramics from La Tuile à Loup in Paris. *Paper flowers*, from \$38 each. shop.thegreenvase.com. *La Tuile à Loup platters*, from \$260. krbnyc.com

PRODUCED BY BENJAMIN REYNAERT

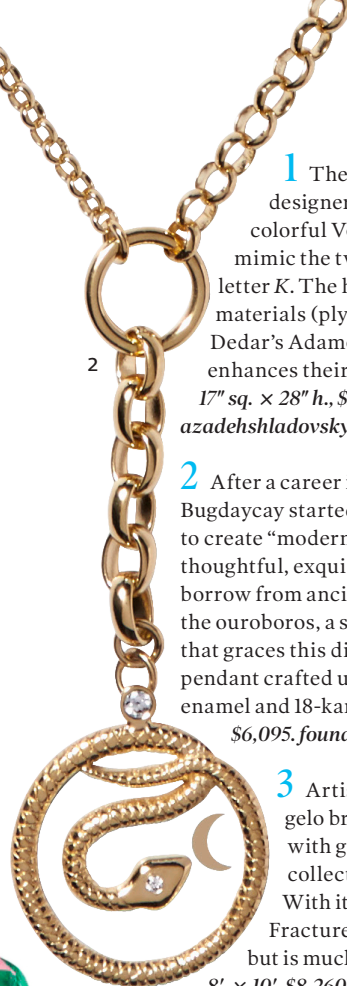


1

2

1 The circles in L.A.-based designer Azadeh Shladovsky's colorful Void chairs are meant to mimic the two dots of the braille letter K. The high-low mix of materials (plywood, satin brass, Dedar's Adamo & Eva velvet) enhances their playful quality. 17" sq. x 28" h., \$12,500 each. azadehshladovsky.com

2 After a career in fashion, Beth Bugdaycay started Foundrae in 2015 to create "modern heirlooms." Her thoughtful, exquisitely wrought pieces borrow from ancient symbols like the ouroboros, a signifier of renewal that graces this diamond-studded pendant crafted using champlevé enamel and 18-karat gold. \$6,095. foundrae.com



3 Artist Fernando Mastrangelo brings his fascination with geology to his debut rug collection for Edward Fields. With its jagged edges, the Fracture I looks like quartz—but is much softer underfoot. 8' x 10', \$8,260; other sizes available. houseoftaping.com



3



4

4 Play "weekend at the Beverly Hills Hotel" wherever you are with this dressing gown featuring the hotel's classic banana leaf wallpaper motif. \$320. shop.dorchestercollection.com

5 We're smitten with Roman and Williams Guild's new retail concept in SoHo, which includes a florist, a café, and a library as well as this Espalda daybed (complete with a French-tufted horsehair mattress), sold exclusively at the shop. 80" w. x 42" d. x 10" h., \$48,000 as shown with deerskin upholstery and white oak base; other finishes and textiles available. rwguild.com



5



1

1 Florence-based Agresti has been making beautiful strongboxes and safes that blend in with even the most refined interiors since 1949. The Lei Lui Noce armoire, shown in Canaletto walnut (white birdseye maple is also available) with 24-karat-gold-plated hardware, features a biometric opening device, six Swiss-made watch winders, and a secret compartment. 39.5" w. × 19.5" d. × 70" h., \$130,000. 1stdibs.com



2

2 Inspired by a range of Brutalist works from the iconic (the Met Breuer) to the unexpected (Yugoslavian World War II monuments known as *spomeniks*), sculptor John Sheppard's Conduit Candlesticks look like concrete but are actually made from stoneware and unfinished brass. Large, shown: 11" h., \$130. johnsheppard.net



3

3 Pratesi's Cavalieri II line reimagines one of the company's classic motifs—first introduced more than 30 years ago—in fresh colorways, like this vibrant purple. Euro sham, \$320 for 26" sq., available in March. 212-288-2315

4 If the sculptural lines of the Cleo Chaise bring to mind the work of Richard Serra, it's no accident: Designer Thomas Pheasant cites the American artist as one of the influences (along with Ellsworth Kelly and Tony Smith) behind his latest Baker collection. In addition to the alabaster velvet seen here, customers can select from 35 textiles to pair with the chaise's oil-rubbed brass legs. 64" w. × 23" d. × 36" h., \$15,027 as shown, available in March. bakerfurniture.com



4



1



2



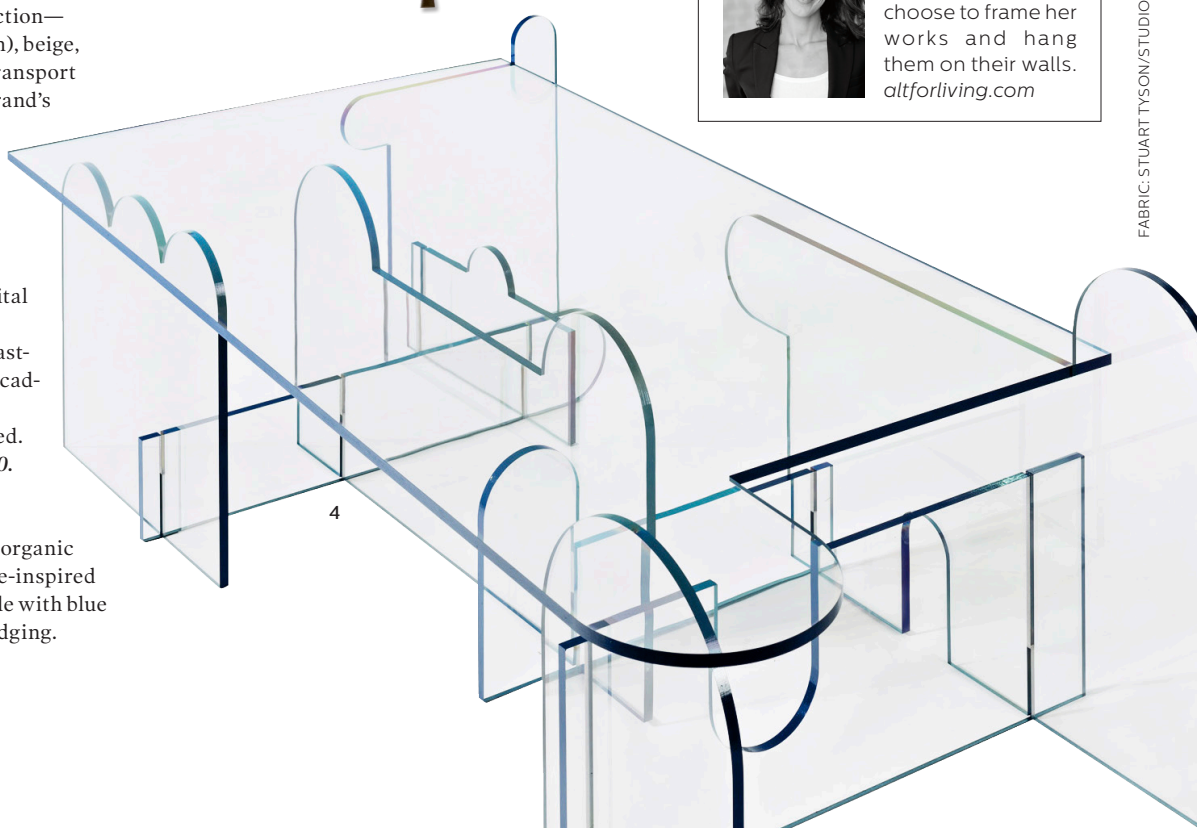
3

1 The Bern sofa, a departure from Dmitriy & Co.'s trademark curves, favors heavy rectilinear angles atop an architectural bronze base. 96" w. x 38" d. x 31" h., \$13,250 as shown or available in c.o.m.dmitriyco.com

2 Themis Z's Serenity collection—available in burgundy (shown), beige, or a rich Aegean blue—will transport you to Mykonos, where the brand's founder, Themis Zouganeli, summered as a child. \$53 for a coffee or tea cup and saucer. themisz.com

3 Achille Salvagni looked to Japan's onetime imperial capital of Kyoto while designing his Simposio wall sconce, with cast-bronze tiers that echo the cascading petals of a lotus flower. A limited run of 20 was produced. 12" w. x 13" d. x 27.5" h., \$16,500. maison Gerard.com

4 Oil-painted edges lend an organic touch to Phaedo's mod, puzzle-inspired Lexan cocktail table. Available with blue (shown) or custom-colored edging. 60" w. x 30" d. x 16" h., \$6,500. phaedodesign.com



4

A selection of Perrine Rousseau textiles, all woven on looms in her Paris atelier. **BELOW:** A look from Balenciaga, one of Rousseau's fashion clients.

PERRINE ROUSSEAU

Like a chef whose culinary philosophy is to let the integrity of his or her ingredients take center stage, Paris textile designer Perrine Rousseau believes that the stars of her understated, organic creations are the alpaca, linen, wool, aluminum, and other materials she incorporates into her weaving. "When I'm creating my fabric, I'm looking to reach a kind of purity and simplicity. I prefer to be at the service of the fiber," explains Rousseau, who studied abstract



painting before discovering textiles. No surprise, then, that many of her clients choose to frame her works and hang them on their walls. altforliving.com

