

The background is a solid black field. Overlaid on this are several large, white, geometric shapes. A large, irregular white shape with rounded corners occupies the upper-left and central portions of the frame. To its right, a smaller white triangle points downwards. In the lower-left, another white shape is partially visible, overlapping the large central one. The overall effect is a high-contrast, minimalist abstract composition.

## Survey

A mood board by Alexandra Loew, the personal significance of Donald Judd's Chair 84, and the year's best outdoor furniture.

01



04



05



02



03

## Filmmaker turned interior designer Alexandra Loew constructs a story around a flaxen Golran rug.

### AS TOLD TO TIFFANY JOW

Rooms created by Alexandra Loew look like still-life paintings, filled with objects that build an intimate narrative around their real or imagined occupants. Conscientiousness permeates the Los Angeles-based designer's work, which spans outfitting a Long Island beach house to renovating a historic Tudor residence in her city's Los Feliz neighborhood and, as of this spring, designing a collection of textiles and wallcoverings informed by ancient Egypt, art deco, and disco-era New York. She's used to playing a chameleon: Before founding her firm in 2004, Loew made documentaries and music videos, honing her inner storyteller. Asked to envision a room around Golran's China Nicholson Liberty rug, she used color to focus the space (as she often does in her practice), drawing from mostly female luminaries including Lina Bo Bardi, Andrée Putman, and Maria Pergay.

**01 CHINA NICHOLSON LIBERTY RUG, GOLRAN**  
"I wanted to create a dark, moody environment—a living room—around the rug's golden hue with pieces that play off of its rich, jewel-tone colors, flowers, and vines."

**02 CUT-OUT AND STUDS LEATHER CORSET BELT, AZZEDINE ALAÏA**  
"I like an unexpected mix of periods and style, and often rely on color to hold the narrative of a room together. This belt relates to the room in that way. I think color is critical to making a space feel like it has a clear focus."

**03 LARRY BELL'S GLASS SCULPTURES**  
"I return to Larry Bell's work time and time again as inspiration for rooms I'd like to live in. The coloration is always relatively pure—a limited bandwidth along the color spectrum. I find the consistency soothing. I like that the geometries are simple, but always viewed at an angle, as well as the depth implied by the surfaces and the simplicity of the materials, which are arranged to make a complex effect."

**04 LARGO DINING CHAIR, DMITRIY & CO.**  
"A room is like a meal: not every element is

going to be the main event. Some things just need to be warm, well-constructed, and easy on the palate. This Dmitriy piece is understated elegance. It's the élan to the carpet's wow."

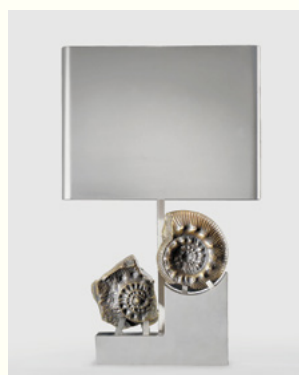
**05 ATRIUM AT THE BEEKMAN HOTEL, NEW YORK**  
"I thought that associating this space with an interior courtyard would set the tone for the kind of smoky space I have in mind. Not smoky like cigarettes, but like smoky-eye: dark and sultry. In my practice, we really see every project as a kind of movie. It's never about my signature or style, and always about making the space about a character in a narrative and making that narrative as detailed as possible."

**06 FOSSIL LAMP WITH SHADE (1975) BY MARIA PERGAY**  
"I love that she experimented with metals. And those metals are intrinsically hard, masculine materials—but she completely transformed them into something sexy without being girly. It's a kind of androgyny that I really appreciate."

PHOTOS (CLOCKWISE FROM TOP LEFT): MARINA RINALDI LONDRA, COURTESY GOLRAN; COURTESY DMITRIY AND CO.; COURTESY THE BEEKMAN; ALEX MARKS, COURTESY THE CHINATI FOUNDATION; COURTESY ALAÏA



12



06



11



07

08



09



**07 KELLY WATCH, HERMÈS**

"Hermès is a heritage brand, so this gives the room some gravitas. The color on the face and the band of this watch would go really well with the carpet. I love its pyramid details."

**08 SCARABÉE BAR (1978), PIERRE CARDIN BRASS BAR STOOLS, PIERRE CARDIN**

"I'm a big fan of Pierre Cardin's furniture and fashion experiments. He worked with artists, artisans, new materials, and sinuous shapes."

**09 GILDO PASTOR CENTER IN MONACO, BY ANDRÉE PUTMAN**

"Her Paris loft was one of the greatest interiors of all time—a true lab of experimentation. She created connections between different eras and styles and it all works. Hers was a mix of high and low, of industrial and refined."

**10 SOFA WITH ARMS (1982) BY SHIRO KURAMATA FOR CAPPELLINI**

"This chair would look fantastic in the living room. The sofa could be nothing but 1980s, and with the carpet, which is kind of 1920s or deco, it's a nice mix."

**11 ADRIANA VAREJÃO'S "SAUNA" PAINTINGS**

"Adriana lives in São Paulo, and I got to meet her a few times. This series of paintings is about sauna houses, and captures the natural variation that happens in handmade tiles. While carpets are more a story within a frame, these color field paintings explore an even more elaborate story within the confines of the artwork."

**12 VALENTINO'S FALL/WINTER 2018/19 WOMENSWEAR COLLECTION, BY PIER PAOLO PICCIOLI**

"I like that this green dress is a billowy column, with a really beautiful, almost Balenciaga-like envelope shape to it. It would look great in this space."